

Al-Futtaim engineering

- SCAFFOLDING AND FORMWORK DIVISION
- AIR CONDITIONING DIVISION
- BUILDING PRODUCTS DIVISION
- FACILITY MANAGEMENT DIVISION
- ELEVATORS DIVISION
- MEP DIVISION

CONTACT DETAILS:

PO Box: 159, Dubai, United Arab Emirates
Tel: +971 4 2119111, Fax: +971 4 2119199
e-mail: alfengg@alfuttaim.ae

Al-Futtaim engineering SCAFFOLDING AND FORMWORK (AFE-SFD)

CONTACT DETAILS:

Al Futtaim Engineering
Scaffolding Division
P.O. Box 159, Dubai, United Arab Emirates
Tel: +971 42858776, Fax: +971 42858592
Email: aft@alfuttaim.ae

Hamad and Mohamad Al-Futtaim

CONTACT DETAILS:

P.O. Box 22132, Doha, Qatar
Tel: +974 4072000, Fax: +974 4072095
Email: amit.kapila@alfuttaim.ae



**TAKING SUPPORT
AND ACCESS TO THE
NEXT LEVEL**



Al-Futtaim engineering
SCAFFOLDING AND FORMWORK DIVISION



AL FUTTAIM ENGINEERING - SCAFFOLDING AND FORMWORK DIVISION



ABOUT US

We are a part of Al-Futtaim Engineering, a multi-disciplinary engineering organisation operating throughout the United Arab Emirates since 1974. Moreover, as a member of the Al-Futtaim Group, we enjoy the benefits of being part of one of the leading business houses operating in the lower Gulf Region with over 65 companies and over 50,000 employees across the UAE, Bahrain, Kuwait, Oman, Qatar, Saudi Arabia, Egypt, Pakistan, Sri Lanka, Syria, Singapore and Europe.

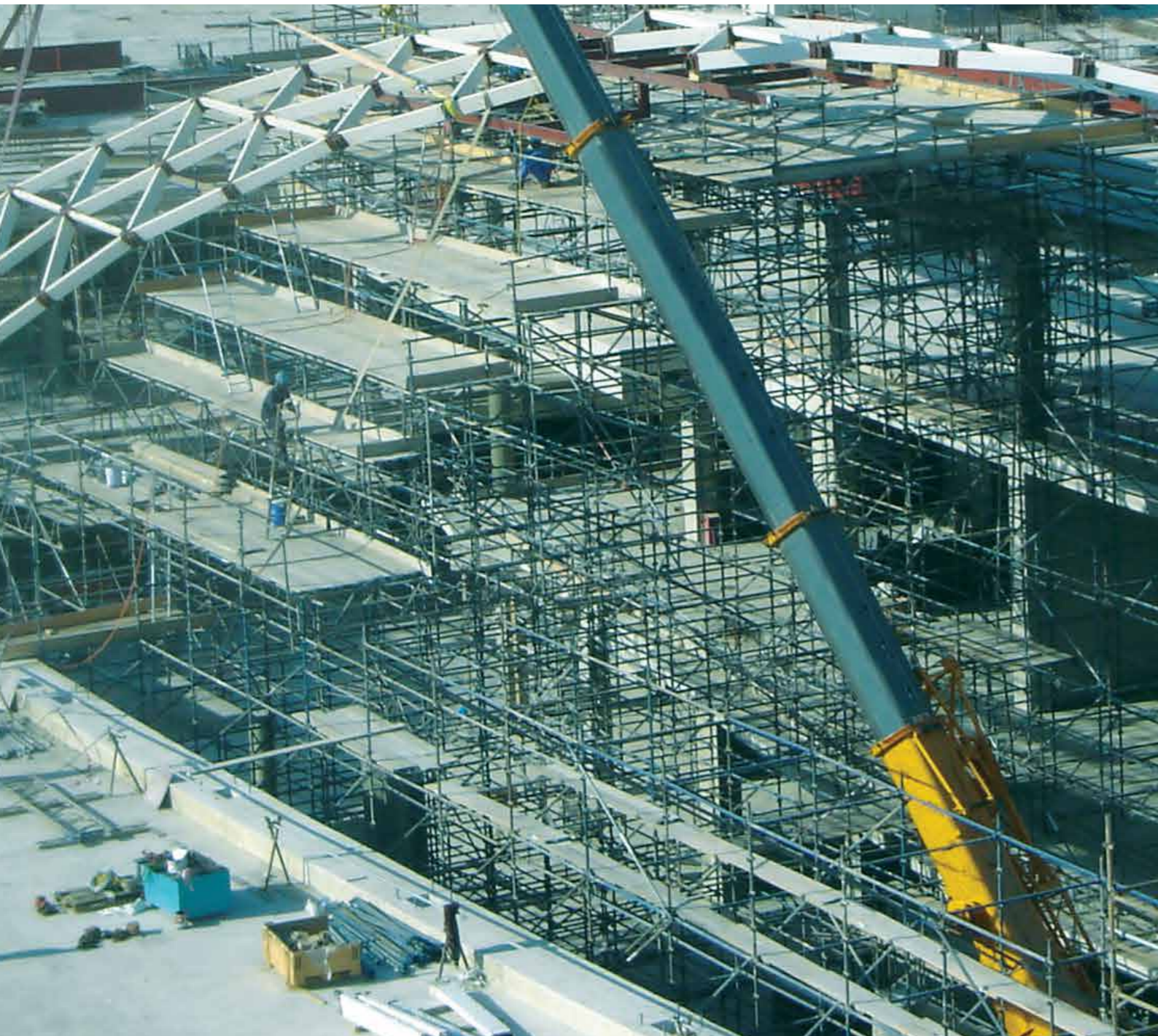
The Scaffolding and Formwork division has been providing access and formwork solutions throughout the Middle East since 1975.

For all your requirements, the Scaffolding and Formwork division brings to the table an unparalleled team of experienced Managers, Engineers and Scaffolding operatives to deliver practical solutions to the most technically challenging situations.

All design and work carried out by Al Futtaim Scaffolding and Formwork Division is in accordance with NASC guidelines, British Standards, Eurocodes, and any other applicable local authority standards. Al-Futtaim Engineering has been recognized and is accredited to ISO 9001:2008 and OSHAS 18001:2007 standards.



PRODUCTS & SERVICES



SCAFFOLDING

Whether your requirement is for access, support or formwork, Al Futtain's dedicated technical team will find a suitable solution to meet your needs.

Design works are carried out by our competent Government approved Engineering team adhering to the latest approved local and international codes and references.

We offer a wide range of solutions including, Contracts, Hire & Sales.



SUSPENDED PLATFORMS & LIFTING SOLUTIONS

We carry a comprehensive range of temporary suspended access platforms supported by fully engineered rigging systems all specially designed to suit each client's requirements.

These solutions are available on Contract, Hire & Sales basis.



FORMWORK

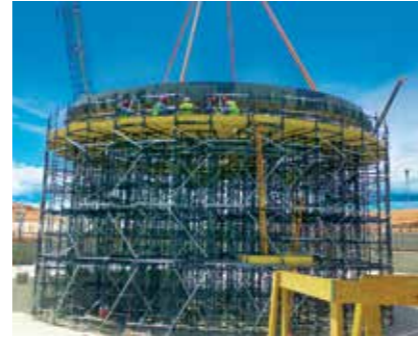
A full range of formwork solutions can be designed and made available on a hire or sale basis.



A GALLERY OF SUCCESSES

We are proud to have been associated with the construction of numerous iconic building as well as nationally important infrastructure projects.

Alongside are some of the many prestigious projects we have been associated with.



Project : EMAL Smelter Project
 Client : Petron Emirates
 Location : Taweelah, Abu Dhabi
 Scope : Support Scaffold for a 400tons Ring for the Alumina Silo Roof



Project : Dredging & Land Reclamation Upper Zakum Artificial Islands
 Client : National Marine Dredging Co
 Location : Abu Dhabi
 Scope : Suspended Cantilever Access Scaffold for Quay Wall Furniture Installation



Project : Burj Al Arab
 Client : Arabian Aluminum
 Location : Dubai
 Scope : Temporary Suspended Access Platform on a Climbing Scaffold Rigging



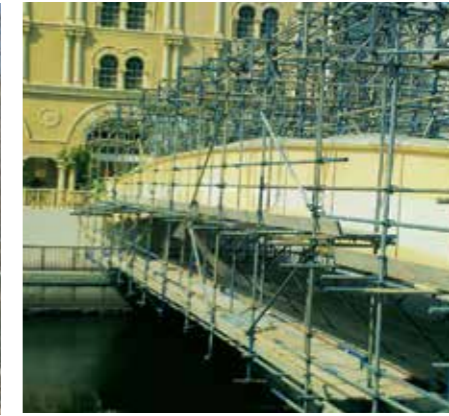
Project : Churchill Tower
 Client : Arabian Aluminum
 Location : Dubai
 Scope : Access Scaffold for Roof Feature



Project : DMCC Al Mas Tower
 Client : Jaggard Middle East
 Location : Dubai
 Scope : Cradle Rigging and Access for Antenna Installation



Project : DFC Sign Board
 Client : Al Futtaim Group Real Estate
 Location : Dubai
 Scope : Sign Board fro Dubai Festival City



Project : DFC Pavilion
 Client : Al Futtaim Group Real Estate
 Location : Dubai
 Scope : Suspended Access Scaffold for Bridge Over Pavilion Canal



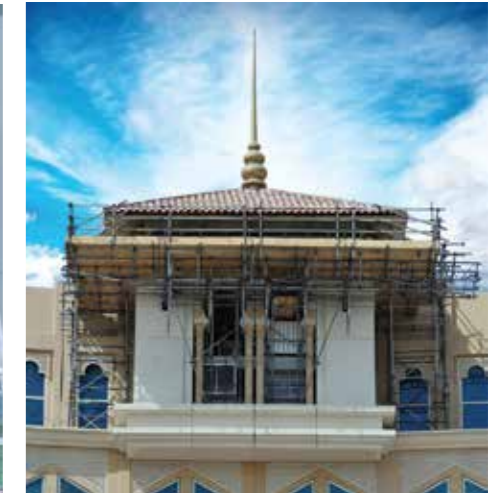
Project : Discovery Gardens
 Client : Larsen & Toubro
 Location : Dubai
 Scope : External Access Scaffold Painting Works



Project : Bright Star Tower, Sheikh Zayed Road
 Client : Dubai Contracting Company
 Location : Dubai
 Scope : Access scaffolding to erect cladding from



Project : Dubai Metro
 Client : Japan Turkey Metro Joint Venture
 Location : Al Jafiliya typical to all 15 stations
 Scope : Internal and External Access Scaffold for all the Stations and Depot



Project : Nilona Tower
 Client : Al Rostamani Pegel L.L.C.
 Location : Jadaf, Dubai
 Scope : 3.0m U-shaped Cantilever Access Scaffold for GRC Fixing



Project : Raffles Hotel - Dubai
 Client : Khansaheb Civil Engineering
 Location : Dubai
 Scope : External Access Scaffold for Cladding Works



Double Coupler



Gravlock / Girder Coupler



Single Coupler



Swivel Coupler

HOW WE CAN HELP YOU?

Whatever your project requirement, Al-Futtaim Engineering – Scaffolding Division offers you the flexibility of hiring or purchasing the scaffolding or access solutions.

Our team of consultants will guide you towards making the right decision that is cost effective and gets the job done.

HIRE & SALES



Adj. Base Jack



Plain Base



Fork Head



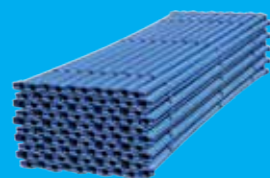
Castor Wheel



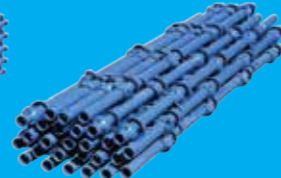
Cradle



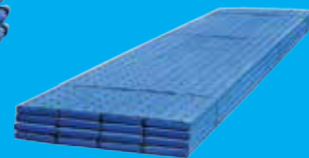
Transom



Cuplock Ledger



Cuplock Standard



Steel Planks



Scaffold Boards



Scaffold Tools



Aluminium mobile Tower

At any given time we have a wide variety of scaffolding materials and consumables available for hire or purchase.

This ranges from steel and aluminum scaffolding elements to a wide variety of accessories. The warehouse also includes a full-fledged workshop which can custom design and fabricate scaffolding elements such as well locks, frames, formworks and related accessories as per the project requirement.



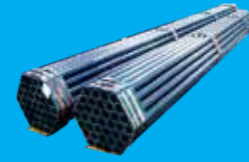
Spigot Connector



Board Retaining Clip



Sleeve Coupler



Scaffold Tubes



Access Ladders



AWARDS & CERTIFICATES

As a leading player in the scaffolding and access industry, safety is the bedrock on which the company's success has been built. Al-Futtaim Engineering – Scaffolding Division has aspired to and achieved product and installation certifications in almost every aspect of its business.

This allows us to be extremely confident about the reliability of the solutions we offer in terms of structural stability as well as the areas of personal health and environmental safety. This in turn is a confidence, all our clients enjoy when they choose Al-Futtaim Engineering – Scaffolding Division as their preferred access solution provider.

OUR CLIENTS

The one thing that is common to all the projects we undertake is our commitment to win the client's trust by providing top quality solutions while maintaining the highest safety standards. Today, this vision allows us to count most of the leading construction and infrastructure development companies operating in the UAE as our clients.

They include:



ADNOC



TAKREER



Dubai Airports



Dubai Electricity & Water Authority



etisalat



RTA



emal



Dubai Aluminium



MAJID AL FUTTAIM



Al Ghurair



carillion



Gulf Petrochem



ADGAS



TARGET



Petron



TOTAL



AL ROSTAMANI PEGEL L.L.C.



KHANSAHEB



ALICO



dusup



Murray & Roberts



ALEC



Brookfield MULTIPLEX



Outotec



EXTERRAN



AL ABBAR



ALJABER



LANG DROUKE



DOOSAN



arabtec



HABTOOR LEIGHTON GROUP



ASGC



dar al-handasah



CRADLE & SUSPENDED ACCESS



This is a specialised area of expertise provided by us. Using our state-of-the-art and customisable hoists, nothing is impossible when it comes to building maintenance and construction access.

We work with one of the world's foremost suppliers in this category Sky Climber, to offer a range of highly configurable hoists from two meters to twelve meters. Our Sky Climber hoists are available with electric or air motors and unparalleled safety features to ensure the most difficult access challenges are achieved with ease.

